

MORE THAN ENGLISH®

International
Summer School

2022



Creating Educational Experiences
That Change Lives and The World.

Experience More, Become More!®





The most personalized summer school in the UK

School Founders, Claire Norwood & David Meddows are always there for your child

Programme:

Subjects

Specialisms

Social

MORE THAN
ENGLISH

Subjects, Specialisms, Social included



Subjects

English Foundation

- English Language

Academic Enrichment

- Global Leadership
- Business & Entrepreneurship
- Advanced English

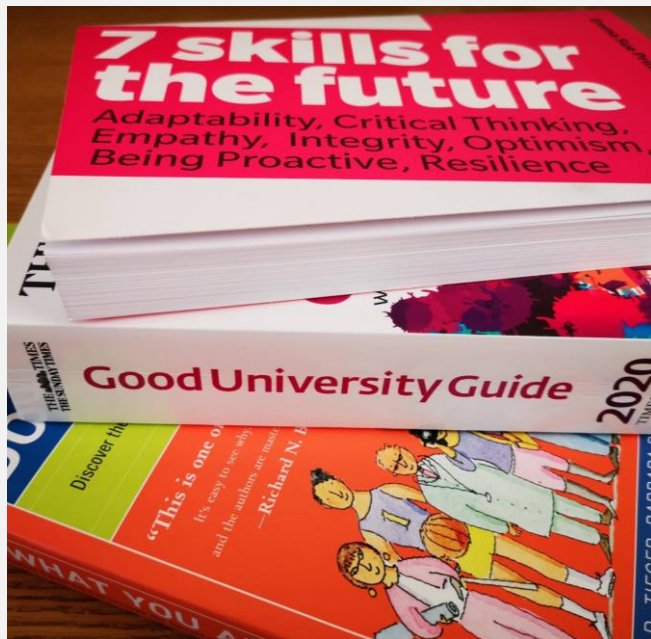
What's your learning objective?

- Confidence
- Academic Skills
- Subject Knowledge

✓ Included in the price
Choose one Subject for your whole stay



[Read more](#)



Specialisms

Active

Film Making

Theatre

Dance

Fine Art

Outdoor Leadership

Pro-Sports

Golf

Tennis

Academic

Creative Writing

English Literature

UN Global Project

University Preparation



✓ Included in the price

You can choose a different Specialism **every week**
(from any category)

[Read more](#)



Social: Late afternoons & evenings
(after Specialisms)

20+ hours per week of
Club Time Activities and Evening Events

Social: Club Time

✓ Included in the price



Volleyball, tennis, swimming, badminton, rounders



Archery, golf, cricket,



'The Game', Cardio Tennis, unihockey, rounders



Jewellery making, T-shirt prints, art and crafts



Forest walks

[Read more](#)

Evening Events

Included in the price



Evening events



CINEMA, BOWLING



STUDENT
PERFORMANCES,
VISITING SPEAKERS



DISCOS, LIP SYNC,
VARIETY SHOW



MOCKTAILS NIGHT,
QUIZ NIGHT,
INTERNATIONAL NIGHT



CAMPFIRE &
MARSHMALLOWS, BBQ

[Read more](#)



Excursions

✓ Included in the price

Included

1 full-day excursion a week
2 half-day excursions a week

Optional extra excursion

Harry Potter Warner Bros. Studio
or Paintball





Bath



Manchester



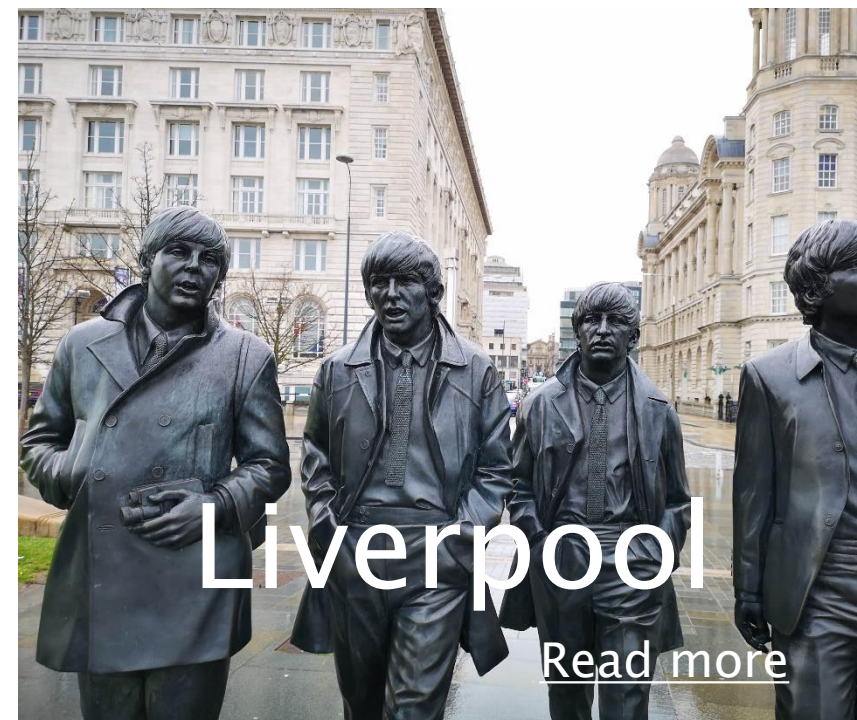
Warwick Castle



London



Oxford



Liverpool

[Read more](#)

Weekly Timetable



	Sat	Sun	Mon	Tues	Weds	Thurs	Fri
Morning 0850-1220	Half-day excursion* Ludlow	Subjects	Subjects	Subjects	Full-day excursion Example: Oxford or Liverpool	Subjects	Subjects
Lunch 1220-1315							
Early afternoon 1315-1630	Arrival / Departure day	Half-day excursion Example: Shrewsbury	Specialisms	Specialisms		Specialisms	Specialisms
			House Time 1630-1700				
Later afternoon 1700-1800			Social & Activities	Social & Activities		Social & Activities	Social & Activities
Dinner & Relax Time 1800-1930							
Evenings 1930-2115	Social & Activities	Social & Activities	Social & Activities	Social & Activities		Social & Activities	Social & Activities
House Time 2115-2215							
Lights out 2230							

*In their departure week, students have 1 half-day excursion



Student care & happiness

By helping students to connect, we give them the confidence to step outside their comfort zone and embrace new challenges.

**MORE THAN
ENGLISH**

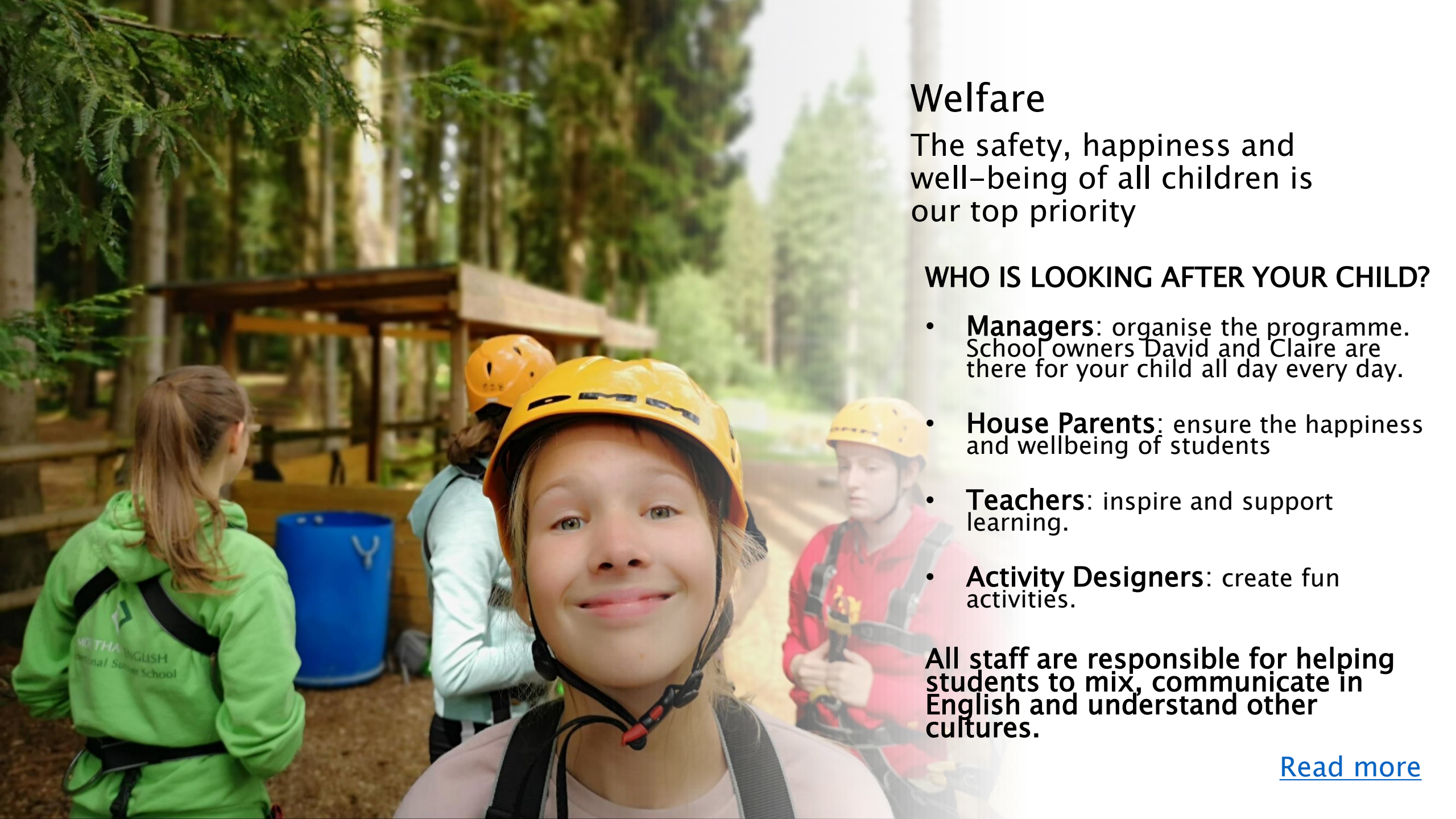
A group of young women are hugging each other outdoors. The woman in the foreground is wearing a bright yellow long-sleeved shirt and has a pink scrunchie on her wrist. She is smiling and looking down. Other women are visible behind her, some with their arms around her. The background shows a brick building with windows and a white door. The scene is brightly lit, suggesting daytime.

Building connections:

We bring students closer together by putting **positive values** at the centre of our programme throughout the day:

- Looking out for each other
- Inclusivity
- Intercultural Awareness and the value of International friendship

We also help students connect with our system of 'House Teams' and by only accepting individuals (no school groups)



Welfare

The safety, happiness and well-being of all children is our top priority

WHO IS LOOKING AFTER YOUR CHILD?

- **Managers:** organise the programme. School owners David and Claire are there for your child all day every day.
- **House Parents:** ensure the happiness and wellbeing of students
- **Teachers:** inspire and support learning.
- **Activity Designers:** create fun activities.

All staff are responsible for helping students to mix, communicate in English and understand other cultures.

[Read more](#)



ACCOMMODATION

- Our comfortable, spacious accommodation is on campus
- For more English practice, students share a room with students the same age from other countries
- Our team of House Parents are on duty 24 hours a day, 7 days a week



2-6 students in a room
4 meals a day
3 dining rooms





Fresh food

Prepared on campus using fresh ingredients by our professional catering team.

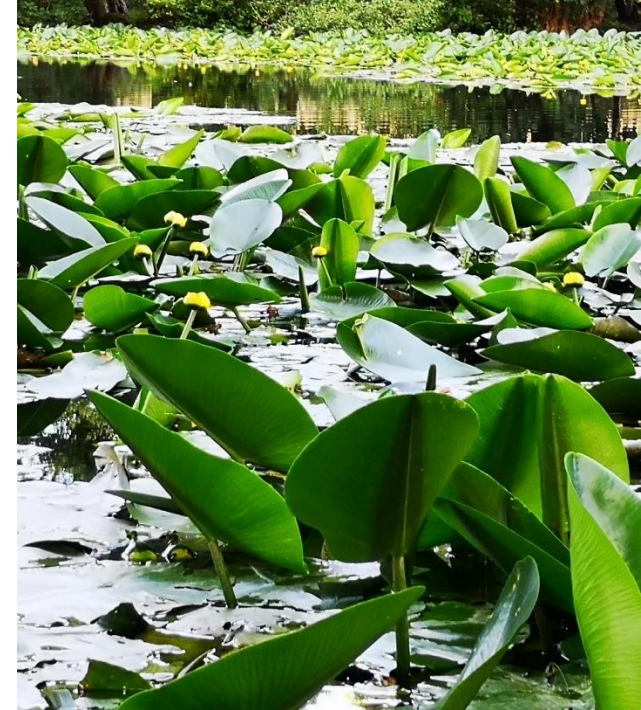
Special diets catered for:

- ✓ Gluten free
- ✓ Vegan
- ✓ Vegetarian
- ✓ Dairy free



The campus





• School and campus:

- 20 hectares of private landscaped grounds
- Full sports facilities including swimming pool, tennis courts and golf course
- Spacious, comfortable, shared accommodation

The campus is 5 minutes away from medieval Ludlow by car

[Read more](#)



Ludlow

Location

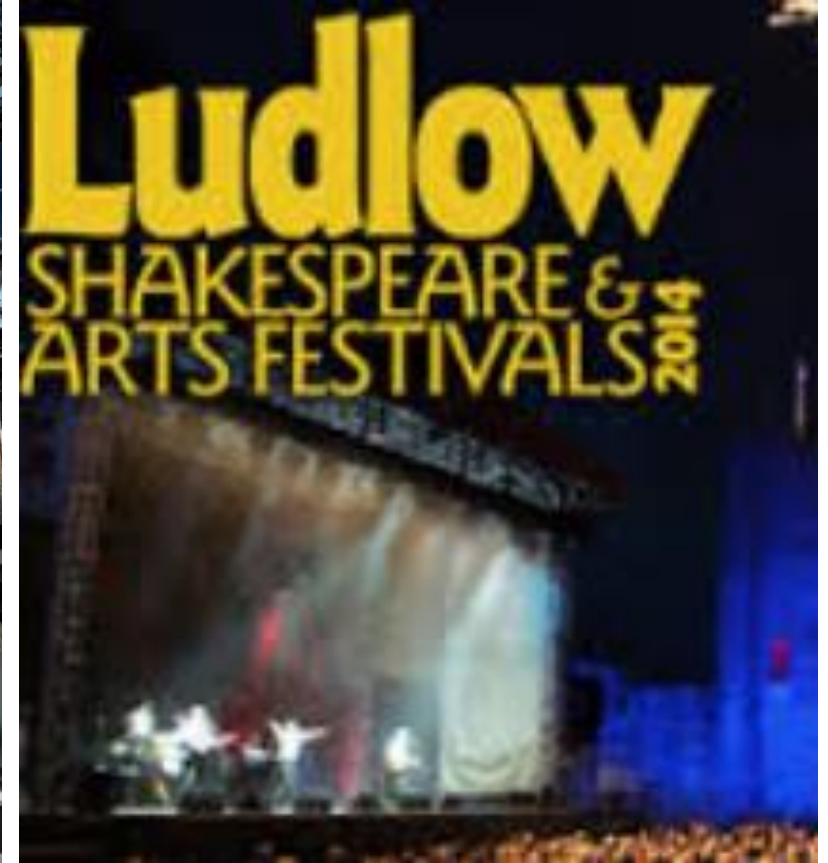


Birmingham Airport
1 hour 30 minutes



London Heathrow Airport
2 hours 41 minutes





Ludlow

F  **d**
Festival

Ludlow: the perfect place for a safe adventure

All students have the opportunity to climb the castle tower and go shopping in the medieval streets. The river is the perfect place to enjoy an ice-cream.

[Read more](#)



School staff at the airport

More Than English Staff will be waiting for your child at arrivals wearing a **green t-shirt** and holding a **green More Than English sign**.

Parent arrivals:

Most children travel to summer school alone. However, some parents choose to fly to England with their children, and either drive a hire car to the campus or rendezvous with school coaches at the airport.



Free Airport coach transfers:

- London Heathrow included
- Birmingham International included

Offered if arriving on flights

- arriving 1100–1600 hrs
- departing on flights 1200–1700 hrs



One inclusive price

- ✓ Subjects
- ✓ Specialisms
- ✓ Social Activities & Excursions
- ✓ All meals
- ✓ Accommodation on campus
- ✓ 24/7 care & supervision
- ✓ Insurance (Medical & Personal Belongings)
- ✓ Airport transfers

[Read more](#)



Dates & Prices 2022

Subjects		Dates	Price
English Foundation + Specialisms			
English Language	(2 wks)	July 9 – July 23 / July 23 – August 6	£2800
Ages 12-17 (A2-B1)	(3 wks)	July 9 – July 30	£4200
	(4 wks)	July 9 – August 6	£5600
Academic Enrichment + Specialisms			
Advanced English	(2 wks)	July 9 – July 23 / July 23 – August 6	£2800
Ages 12-17 (B2-C1)	(3 wks)	July 9 – July 30	£4200
	(4 wks)	July 9 – August 6	£5600
Business & Entrepreneurship	(2 wks)	July 9 – July 23 / July 23 – August 6	£2800
Ages 13-15 (B2-C2)			
Global Leadership	(2 wks)	July 9 – July 23 / July 23 – August 6	£2800
Ages 15-17 (B2-C2)	(3 wks)	July 9 – July 30	£4200
	(4 wks)	July 9 – August 6	£5600

[Read more](#)

How to book

We accept bookings through our Website or from authorized Agencies

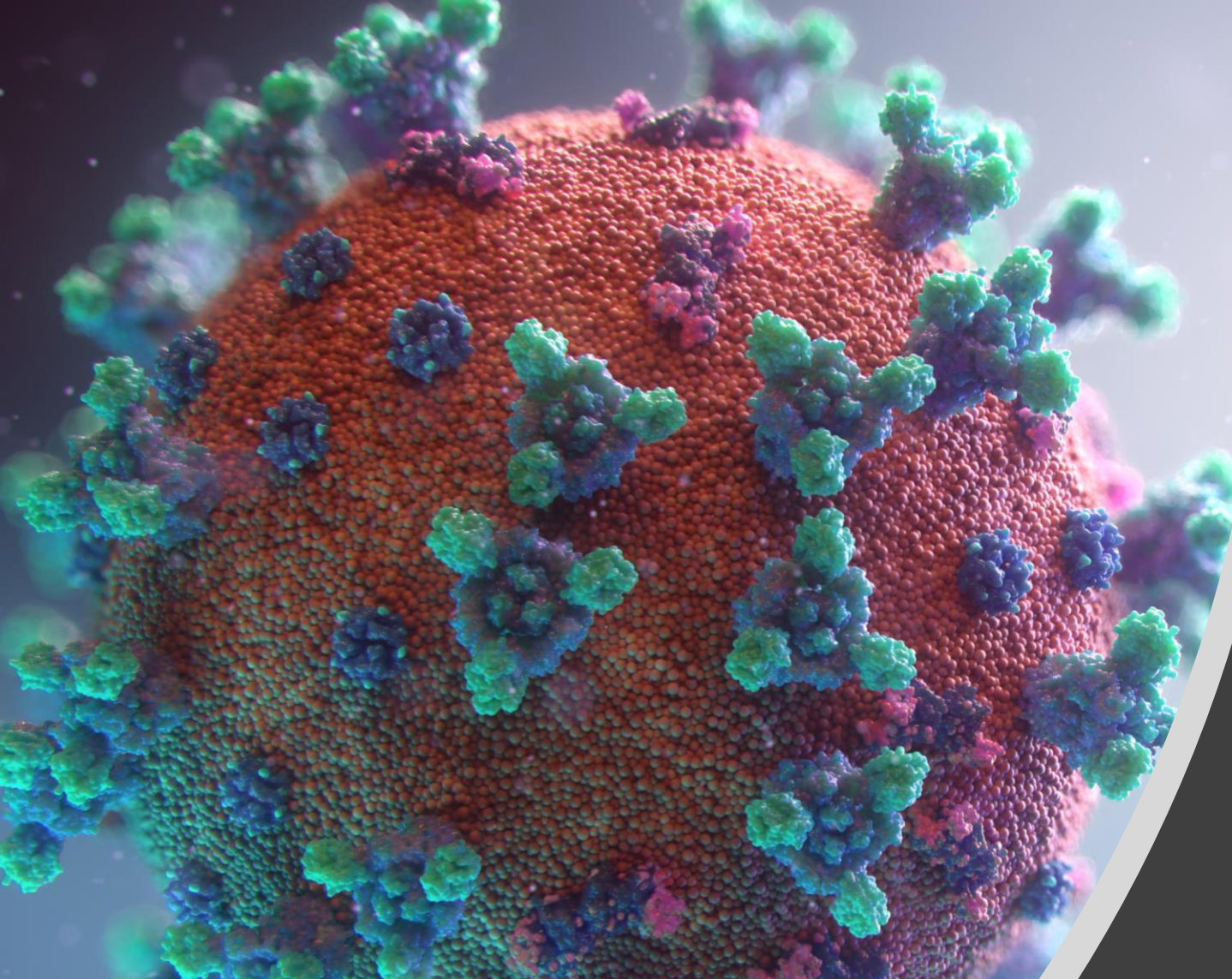


IT'S EASY TO BOOK

1. Go to www.morethanenglish.co.uk
2. Fill in the Online Booking Form to choose your child's Subject, Specialisms and excursion options
3. We send the course confirmation with an invoice by email
4. You pay the full amount or deposit
5. We sent the Oxford English Test for your child

Design your perfect course





Book with confidence

£300 deposit only

Cancel for any reason on or before April 30, 2022 and get a full refund

Cancel between May 1 and May 30, 2022 and lose your deposit (£300) only

Get a full refund even after May 31, 2022 if you cannot travel legally because of a new Covid-19 variant, for example, if there is a lockdown in your city on your day of departure

Please note:

No refund is available on or after May 31 if you are **disinclined** to travel.

We include Personal Accident & Travel Insurance for every student

(please read [Terms and Conditions](#))

As of March 18, 2022:

There are no travel restrictions to the UK. You **do not need** to complete a UK passenger locator form before you travel, take any COVID-19 tests or quarantine when you arrive in England.

Questions?

School Owners David & Claire are here to help you.



[Book a video consultation](#) with David & Claire



Ask a question using **Whatsapp**:

Claire: +44 77 549 23 944

David: +44 75 956 36 575



Email us: claire.norwood@morethanenglish.co.uk

david.meddows@morethanenglish.co.uk



More Than English's UK campus is accredited at Premier Status by Accreditation Service for International Colleges (ASIC) for its commendable areas of operation.

We take our responsibility to the planet seriously

In partnership with Ecologi we are:

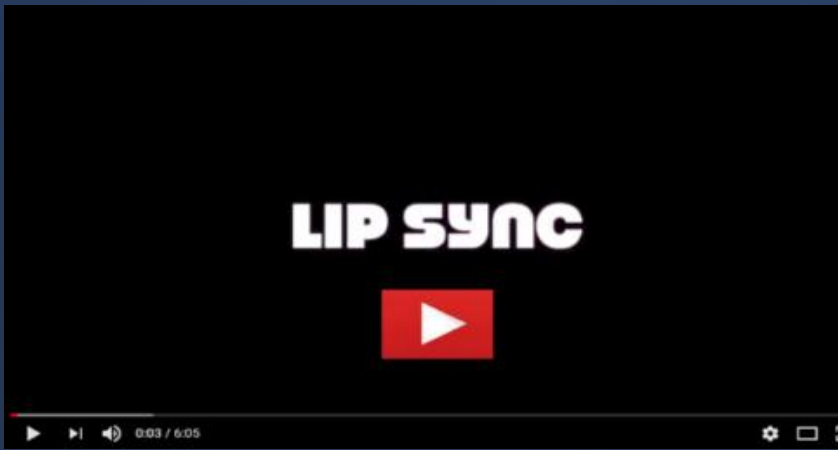
- Offsetting carbon emissions from students' flights
- Offsetting carbon emissions produced by our staff
- Supporting reforestation and carbon offsetting projects



Ecologi

Read [more](#) about More Than English's partnership with

<https://ecologi.com/morethanenglish>



Click on the videos!

Experience More, Become More!®

www.morethanenglish.co.uk



Ecologi

